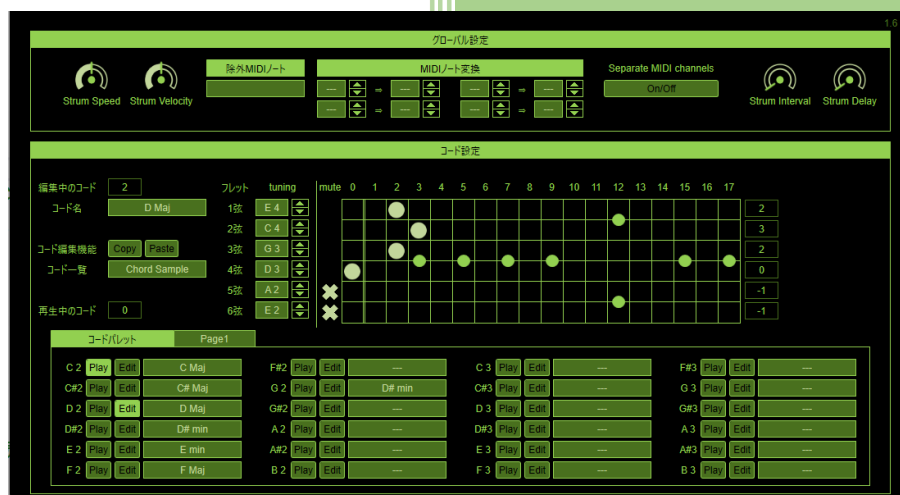




Utsbox MIDI Tool2 Manual

simplified version



VST
COMPATIBLE

VST is a registered trademark of
Steinberg Media Technologies GmbH

Version 1.6

Utsubo Kazura

2025 年 8 月 17 日

1 Table of Contents

2	Overview	1
3	Installation.....	1
4	How to use.....	2
4.1	Initial Setup	2
4.2	Creating a strum	4
5	Finally	6

2 Overview

Utsbox MIDI Tool2 is a MIDI effect VST plug-in for guitar tones that generates guitar chord strum.

[note] Utsbox MIDI Tool2 does not produce sound on its own. To produce sound, you need to prepare a instrument on another track and route MIDI between the tracks.



VST is a trademark of Steinberg Media Technologies GmbH, registered in Europe and other countries.

3 Installation

After extracting the downloaded ZIP file, move the entire UtsboxMIDITool2.vst3 folder to the VST3 folder (see below). If you do not have a VST3 folder, please create one.

C:\Program Files\Common Files\VST3

If Ableton Live does not recognize the downloaded VST3 plug-in, try changing the folder name from "UtsboxMIDITool2.vst3" to "UtsboxMIDITool2".

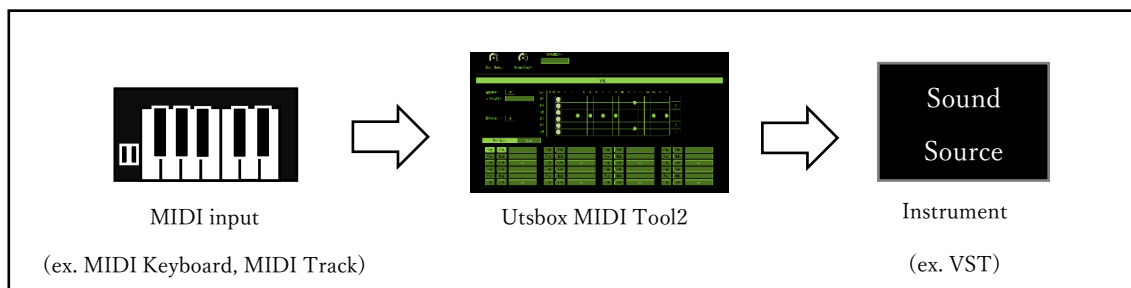
To uninstall, delete the UtsboxMIDITool2.vst3 folder.

4 How to use

4.1 Initial Setup

First, please configure the following:

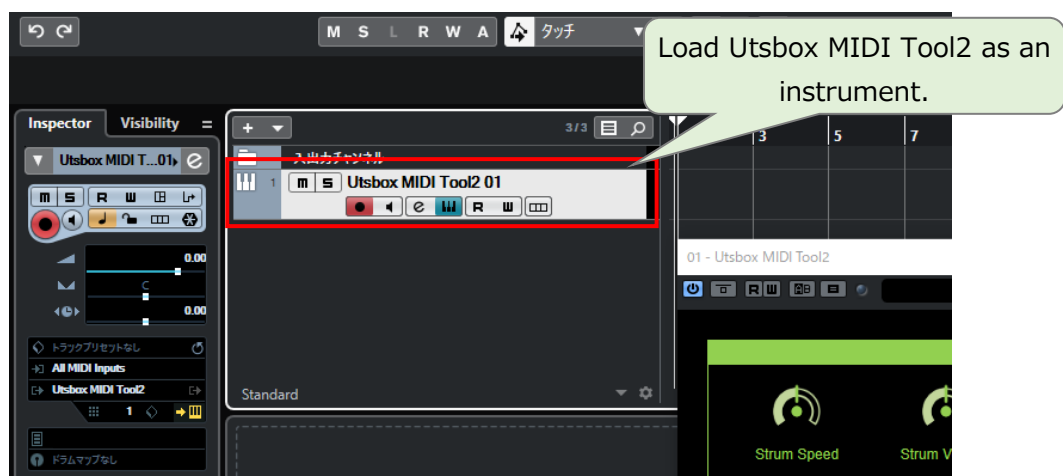
1. Load Utsbox MIDI Tool2 into a track in your DAW.
2. Load the instrument into another track.
3. Route the application's MIDI so that the MIDI input follows the flow below.



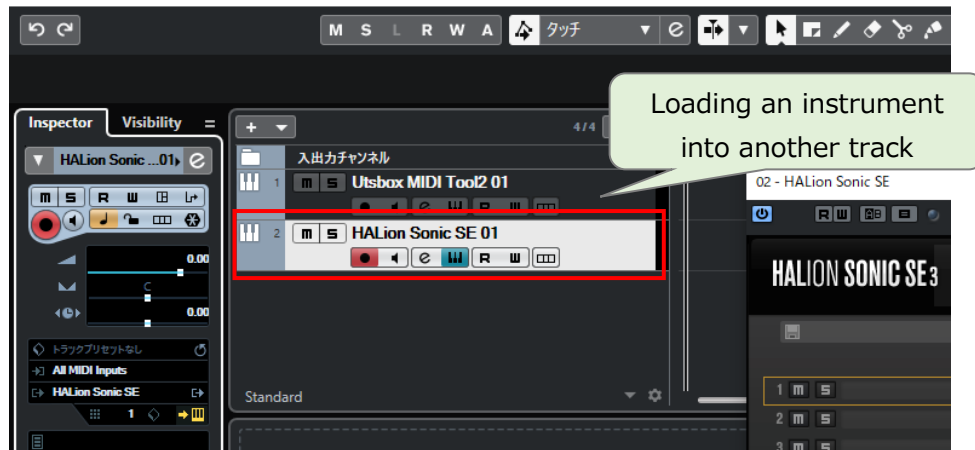
In Cubase 10, follow the steps below to set it up.

Other DAWs should have the same function, so please check the manual for each DAW before setting it up.

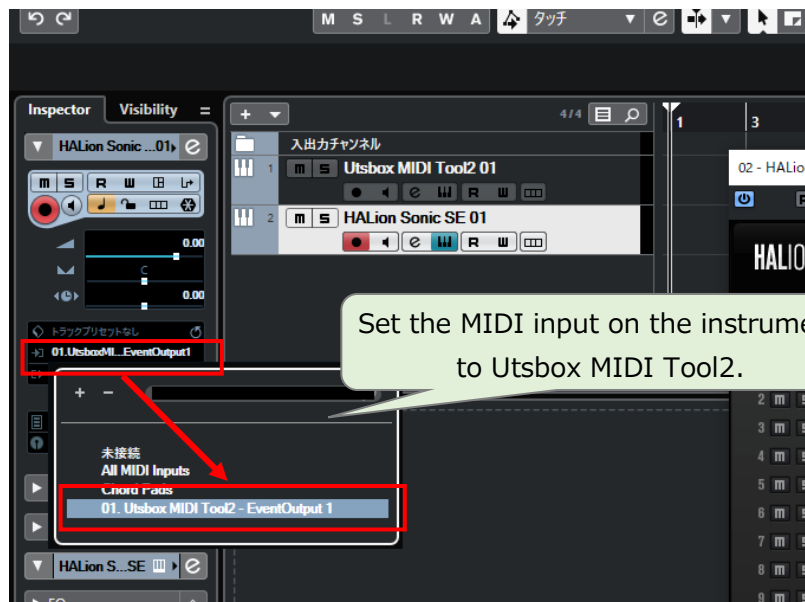
1. Load Utsbox MIDI Tool2 as an instrument.



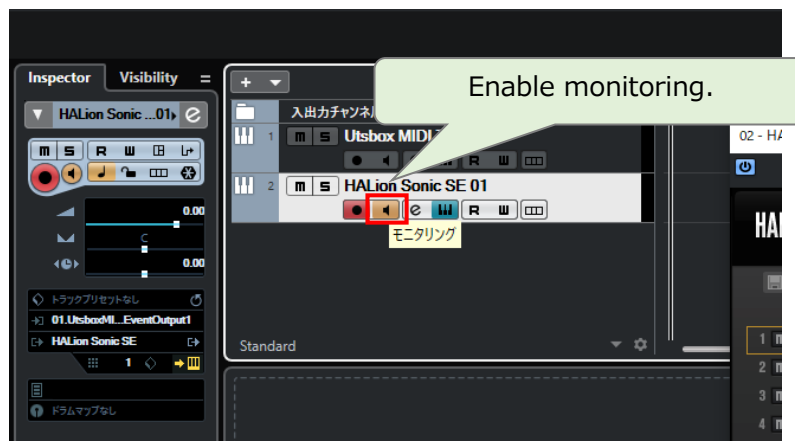
2. Loading an instrument into another track



- Set the MIDI input on the instrument to Utsbox MIDI Tool2.



- Enable monitoring.



4.2 Creating a strum

Next, create strums using the following steps:

1. Assign a guitar chord to the chord-switching keyswitch.
2. Input MIDI notes into a Utsbox MIDI Tool2 track and generate strums using chord-switching keyswitches and strum keyswitches.

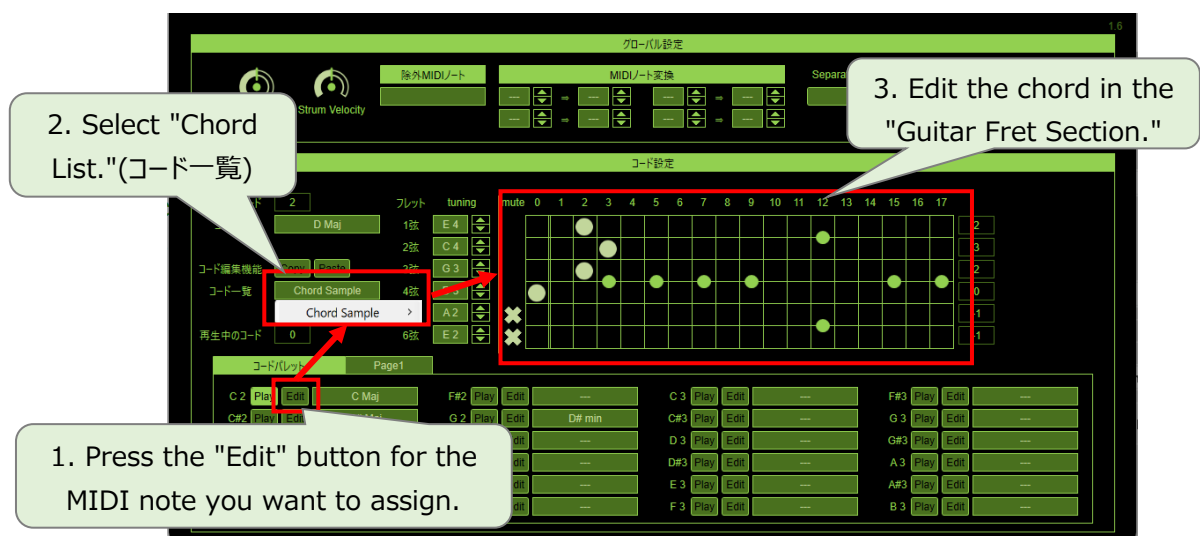
In Cubase, set it as follows:

1. Open Utsbox MIDI Tool2's UI



2. In Utsbox MIDI Tool2's UI, press the "Edit" button for the MIDI note you want to assign and select "Chord List." (コード一覧). Then edit the chords in the "Guitar Fret Section".

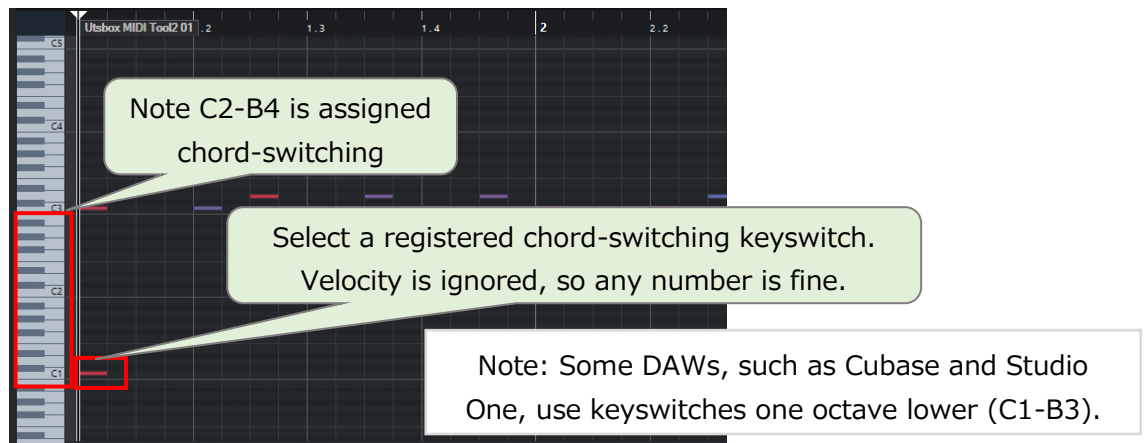
Repeat the same steps to assign as many guitar chords as you need.



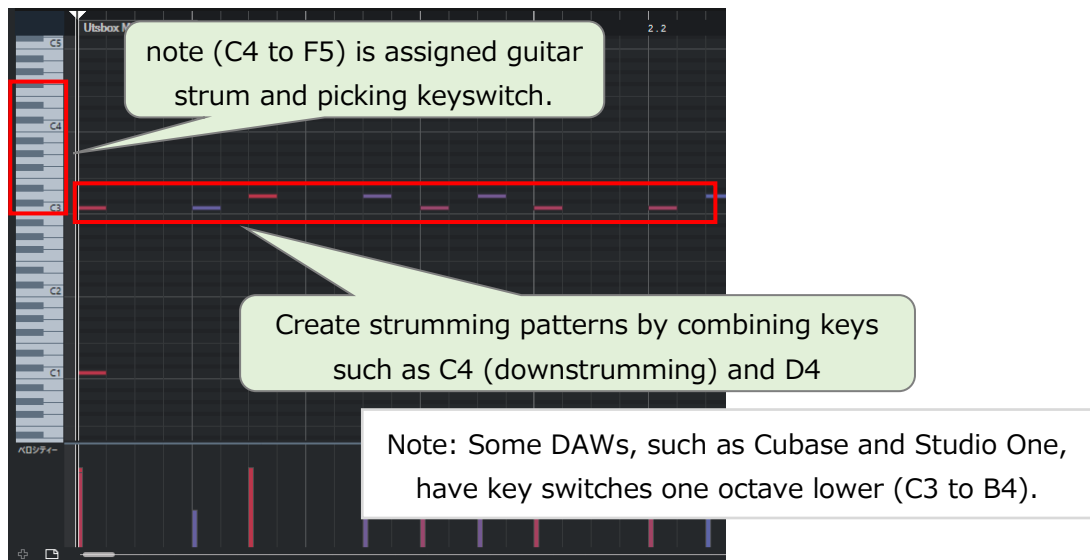
[note] The MIDI note notation for this VST plug-in is "middle C = C4" (international standard). Please note that some DAWs (Cubase, Studio One, etc.) use "middle C = C3" (YAMAHA standard).

For example, C2 in Utsbox MIDI Tool2 becomes C1 in Cubase.

- Input MIDI notes it assigned chord-switching keyswitch into a Utsbox MIDI Tool2 track.



- Input MIDI notes it assigned guitar strum and picking keyswitch into a Utsbox MIDI Tool2 track.



Guitar strum and picking keyswitch assignment

Notes	Keyswitch
C4	Down Strumming
C#4	Down Strumming (Only the three lower strings)
D4	Up Strumming
D#4	Up Strumming (Only the three upper strings)
E4	Picking 6th string
F4	Picking 5th string
G4	Picking 4th string

Notes	Keyswitch
A4	Picking 3rd string
B4	Picking 2nd string
C5	Picking 1st string
D5	Down Strumming with mute
E5	Up Strumming with mute
F5	Stop all the strings

5 Finally

This manual is a translation of only the bare minimum.

For detailed settings, please refer to the Japanese version of the manual.